

Like Tweet

If you are having trouble viewing this email, [click here](#).

Dear Residents of SD-44:

I am headed back to Harrisburg this week and I have brought extra masks for my colleagues who may have misplaced theirs. There have been a number of [news reports](#) out of Harrisburg focused on election security and integrity. Many of these efforts led by the Majority party are attempts to sow distrust and erode confidence in our election system. I am focused on ensuring that everyone regardless of party affiliation has an opportunity to make their voice heard and cast their vote either in-person or by-mail.

You are not alone when faced with issues that you need assistance with. We are here to help! My staff and I are always available by phone at 610-792-2137 and by email at senatormuth@pasenate.com to help answer your questions and provide you with the resources that you need.

Senator Katie Muth

Mail-in Ballot Reminders

Mail-in ballots are [beginning to arrive](#) in mailboxes. Please make sure to follow these important steps when preparing your ballot, so that you can ensure that your vote will be counted.

My office has received a number of calls from constituents concerned about the status of their mail-in ballot. You can check your ballot status [here](#). If you have not requested your ballot you can do so by October 27th, but we strongly recommend [applying](#) as soon as possible.

For a list of mail-in ballot drop-off locations by county, important dates, and other important information visit www.senatormuth.com/vote.

Mail-In Ballot Reminders



Complete your entire ballot in blue or black ink.



Seal the ballot in the small secrecy envelope, then place that in the larger return envelope. If you do not place the ballot in the secrecy envelope first, your vote won't count.



Sign and complete the vote declaration on the back of the larger return envelope.



Mail your ballot or return it in person to your county election office or another official drop-off location today.

For information on drop-off locations, or important dates go to senatormuth.com/vote

Norristown Area School District: 1 Million Meals Served

The Norristown Area School District has remained committed to fully serving families throughout the COVID-19 pandemic, including continuing food service while their students have been home receiving their educational program remotely.

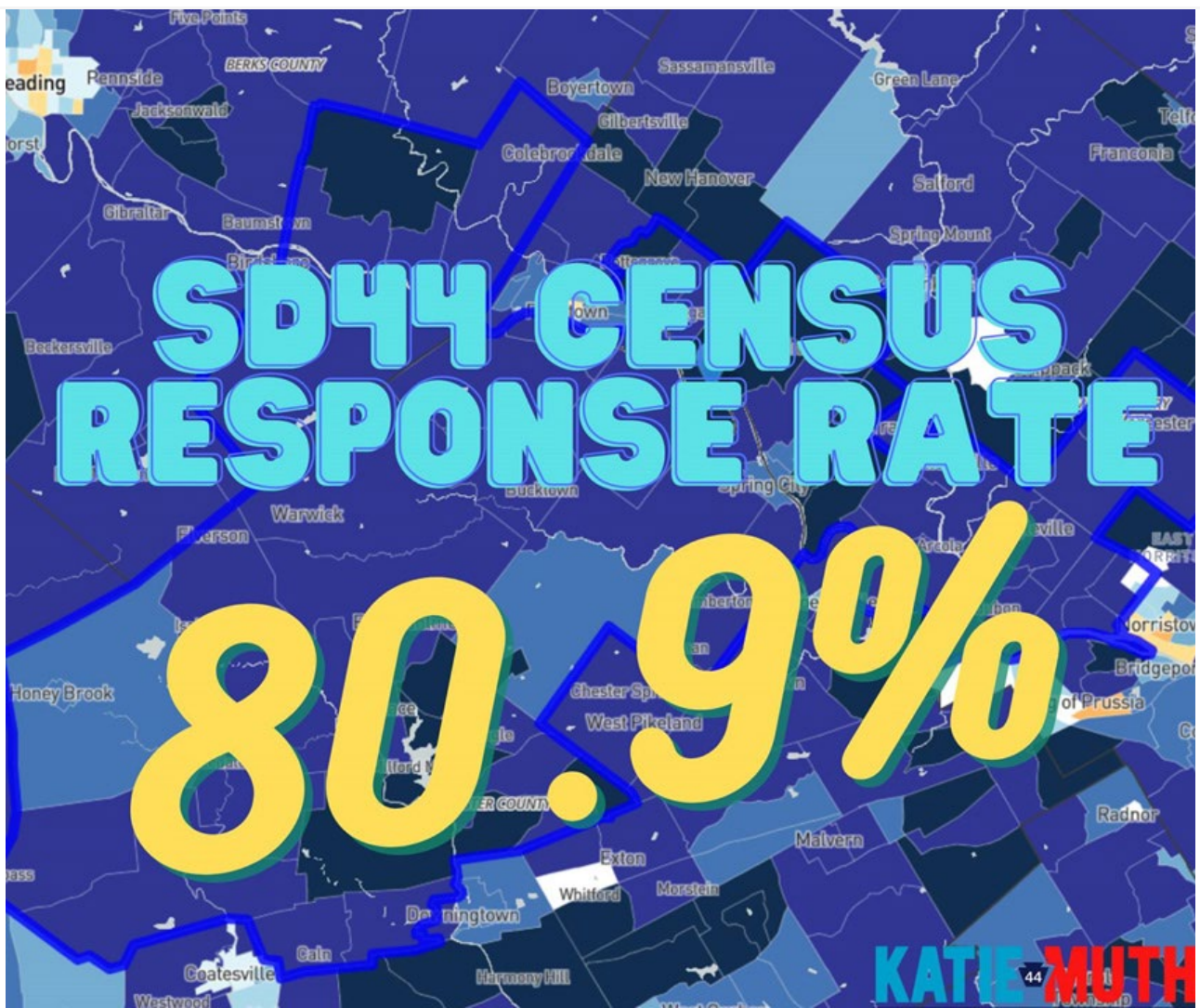
Last week I was on-hand to help distribute NASD's 1,000,000th (one millionth) meal since schools moved to virtual learning on March 13. Superintendent Christopher Dörner, his administration and the faculty have done a tremendous job serving their families during this national crisis. Thank you for your commitment to the community and the Norristown Area School District.



TODAY: Census Response Deadline

The census deadline is TODAY! By completing the quick 10 minute census survey, you can help ensure that our community receives its fair share of federal funding for things like roads, schools, Medicaid, SNAP, and emergency services.

So far, SD44 sits at an 80.9% response rate. Complete the census today at www.2020census.gov, or via phone at 844-330-2020.



In the District: Successful Shred Event!

Thank you to everyone who stopped by the shred event that Rep. Danielle Friel Otten and I hosted last week. It was truly a team effort with all hands on deck to make sure that everyone was taken care of. Thank you to both of our staffs who hustled to keep the line moving.

We ended up filling two trucks to max capacity and even had a few volunteers lend a hand to keep the cars moving! It was nice to meet all of you who stopped by.



How to Stay Informed

Pennsylvania Department of Health

- The PA DoH [Daily COVID-19 report](#). Updated regularly throughout the day.
- Follow the PA Health Department on [Twitter](#).
- Follow them on [Facebook](#).

U.S. Centers for Disease Control and Prevention

- Follow the CDC on [Twitter](#).
- Follow the CDC on [Facebook](#).
- Learn how best to [prevent "community transition"](#) with specific details on what to do before, during, and after outbreaks.

Be sure to check out the complete list of information, data, and resources available to those in:

[Berks County](#)

[Chester County](#)

[Montgomery County](#)



SIGN UP FOR TEXT ALERTS
from

KATIE MUTH
PENNSYLVANIA STATE SENATOR

Submit your mobile number to stay up-to-date with the latest events and happenings from Senator Katie Muth sent right to your phone.



DISTRICT OFFICE

338 Main Street
Royersford, PA 19468
Phone: (610) 792-2137
Fax: (610) 948-3037

HARRISBURG OFFICE

185 Main Capitol | Senate Box 203044
Harrisburg, PA 17120-3044
Phone: (717) 787-1398
Phone: (717) 783-4587

